

TOORX

PROFESSIONAL LINE

INSTRUCTION



BRX9500



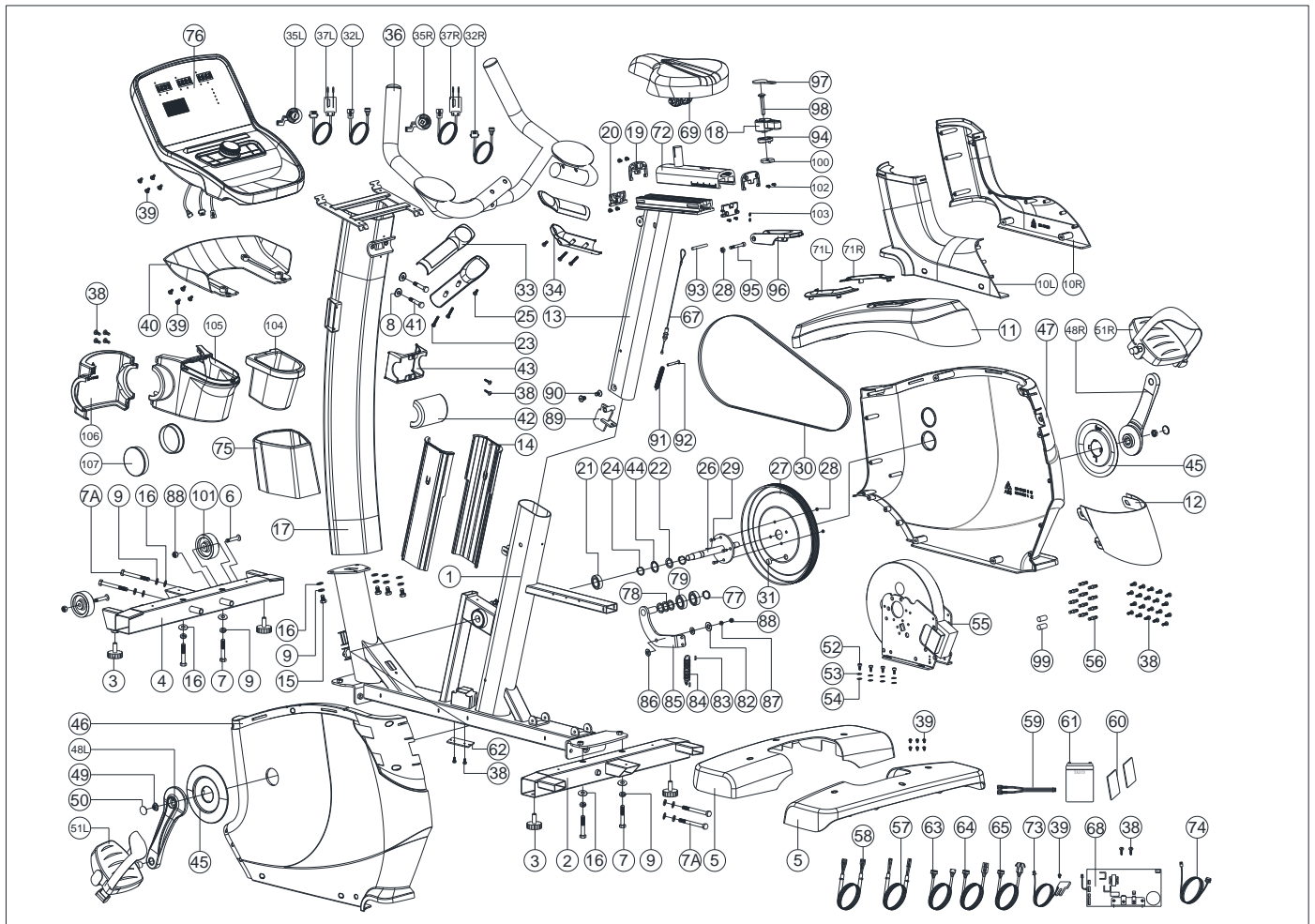
Cod: GRLDTOORXBRX9500

Rev : 00

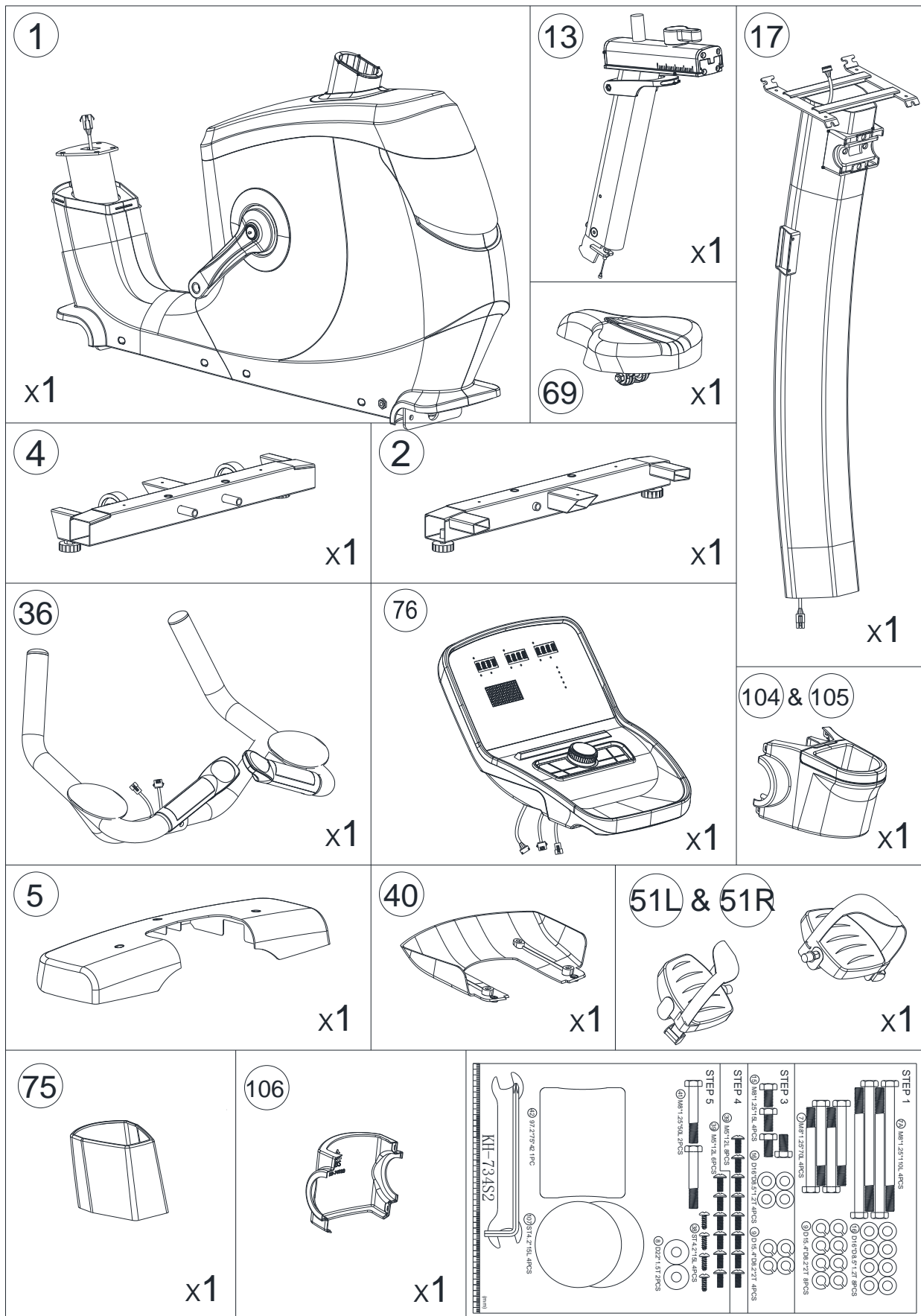
Ed : 09/20



Exploded drawing:



Check list:



Part list:

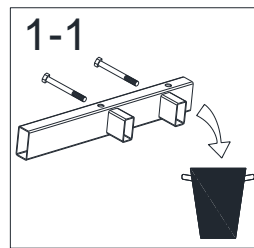
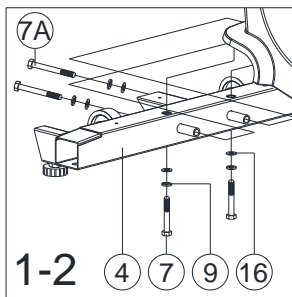
Part no	Description	Specification	Qty
1	Main frame		1
2	Rear stabilizer		1
3	Adjustable wheel		4
4	Front stabilizer		1
5	Front stabilizer cover		2
6	Allen bolt	M8*1.25*40L	2
7	Hex bolt	M8*1.25*70L	4
7A	Hex bolt	M8*1.25*110L	4
8	Curved washer	D22xD8.5x1.5T	2
9	Spring washer	D15.4xD8.2x2T	12
10L	Front decorative cover(left)		1
10R	Front decorative cover(right)		1
11	Upper decorative cover		1
12	Rear cover		1
13	Seat post		1
14	Inner tube	50*100*340L	2
15	Allen bolt	M8*1.25*15L	4
16	Flat washer	D16*D8.5*1.2T	12
17	Handlebar post		1
18	Adjustable handle		1
19	End cap (1)		2
20	End cap (2)		2
21	bearing	#6004-2RS(C0) , SKF	2
22	waved washer	D27*D20.3*0.5T	1
23	Screw	M3*0.5*30L	4
24	C ring	D22.5*D18.5*1.2T	2
25	cross screw	M3*0.5*12L	2
26	crank axle		1
27	pulley wheel		1
28	anti-loose nut	M6*1.0*6T	5
29	Hex bolt	M6x1.0x15L	4
30	Multi-groove belt		1
31	Round Magnet		1
32L	Upper cable for quick button (2)	400L	1
32R	Upper cable for quick button (1)	400L	1
33	Upper cover for handpulse		2
34	Lower cover for handpulse		2
35L	Membrane button (-)		1
35R	Membrane button (+)		1

36	Handlebar		1
37L	Lower cable for quick button (2)	850L	1
37R	Lower cable for quick button (1)	850L	1
38	Screw	ST4.2*15L	38
39	cross bolt	M5*0.8*12L	16
40	Back cover for console	337.6*225.5*58.4	1
41	Bolt	M8*1.25*50L	2
42	rear protective cover for handlebar		1
43	front protective cover for handlebar		1
44	Flat Washer	D26*D21*1.5T	1
45	crank cover		2
46	left chain cover		1
47	right chain cover		1
48L	left crank		1
48R	right crank		1
49	anti-loosing nut	M10*1.25*9T	2
50	Bolt cover		2
51L&51R	Pedal		1
52	Screw	M6*1.0*15L	4
53	spring washer	D10.5*D6.1*1.3T	4
54	Flat Washer	D13*D6.5*1.0T	4
55	Self-generator		1
56	Pin	D6*26.5*7.7	12
57	Connecting cable	500L	1
58	Connecting cable(2)	1000L	1
59	Battery connecting cable	750L	1
60	Buffer	25*2T*80	2
61	Chargeable battery		1
62	Fixing plate(1)		1
63	Upper computer cable	300L	1
64	Middle computer cable	1000L	1
65	Lower computer cable	1350L	1
67	Tension cable	D1.5*507.5L	1
68	control board		1
69	Saddle		1
71L	left gasket for chaincover		1
71R	Right gasket for chaincover		1
72	Adjustable tube for saddle		1
73	sensor cable	500L	1
74	Electric cable	700L	1

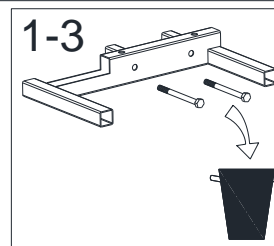
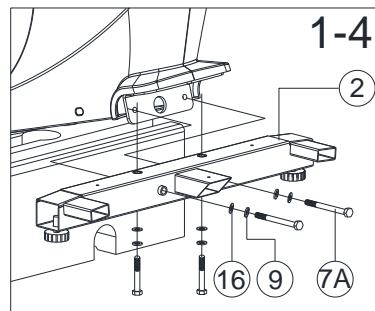
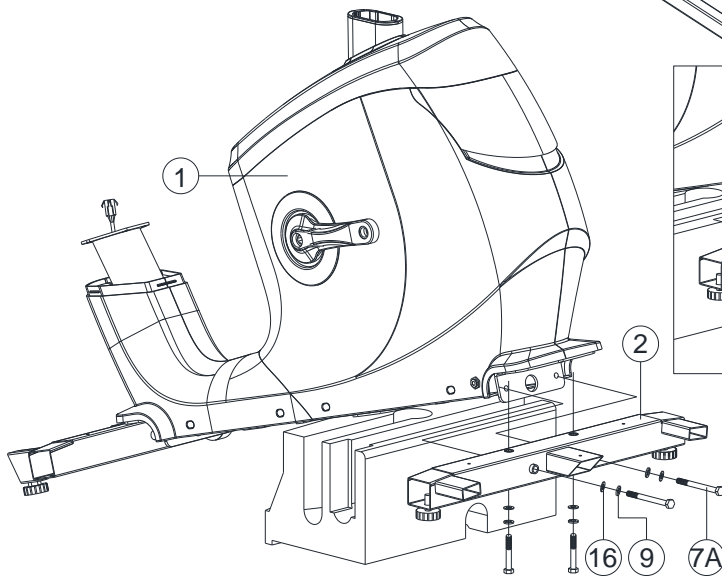
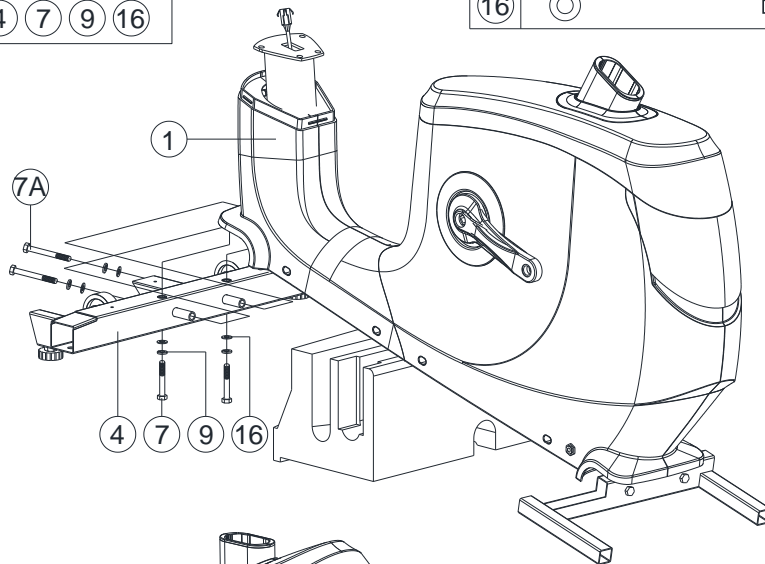
75	Upper protective cover		1
76	computer		1
77	C ring	S-17(1T)	1
78	waved washer	D17*D22*0.3T	3
79	bearing	6203-2RS , SKF	2
82	Flat washer	D28*D8.5*3T	1
83	Plastic cover		2
84	Spring	D2.2*D14*55L	1
85	Fixing plate for idle wheel		1
86	Plastic washer	D10*D24*0.4T	2
87	Nut	M8*1.25*6T	1
88	Nylon nut	M8*1.25*8T	3
89	Adjustable pole		1
90	Allen bolt	M8*1.25*16L	2
91	spring	D1.5*D14*50L	1
92	Bolt	M5*0.8*40L	1
93	Fixing bar		1
94	Tighten gasket		1
95	screw	M6*1.0*45L	1
96	Pull handle		1
97	End cap for adjustable handle		1
98	bolt	M8x1.25x50L	1
99	buffer	D10.5*20L	2
100	block plate		1
101	moving wheel		2
102	Round head cross screw	M5x0.8x10L	4
103	Inner hex fastening screw	M5*0.8*12L	2
104	water bottle holder		1
105	water bottle holder(front)(black)		1
106	water bottle holder(rear)(black)		1
107	cap		2
	Allen spanner		1
	open spanner		1

Assembly drawing:

STEP 1



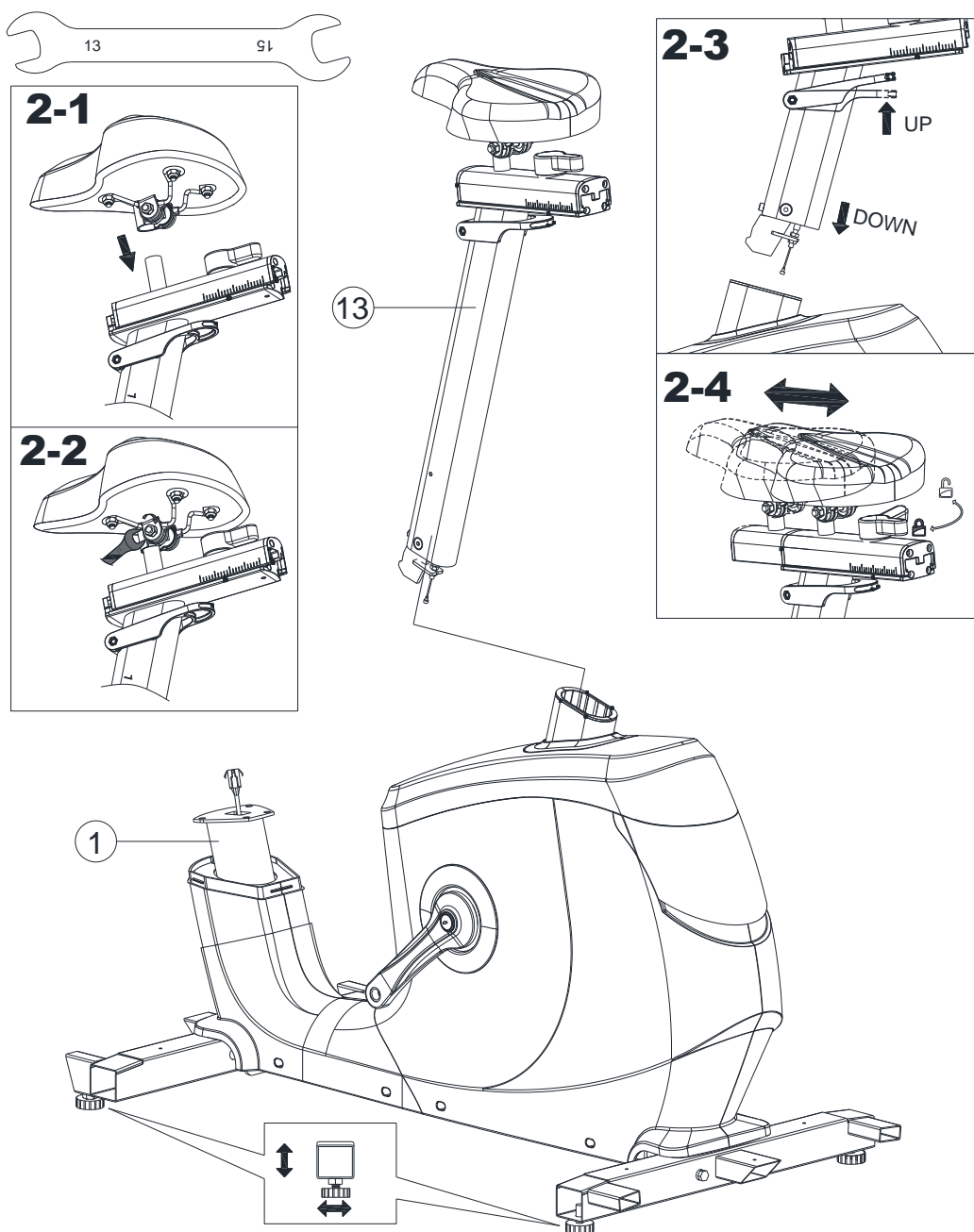
7		M8x1.25x70L	x4
7A		M8x1.25x110L	x4
9		D15.4xD8.2x2T	x8
16		D16xD8.5x1.2T	x8



Step-1

1. Throw away the tube and bolts under the front side of the main frame into trash can as per fig 1-1. Please note they are just the parts to support the main frame to simplify your assembly.
2. Raise up the frame, assemble the front stabilizer (4) onto the main frame (1) by using the cross bolt (7&7A), the spring washer (9) and the flat washer (16). Please refer to 1-2.
3. Throw away the tube and bolts under the rear side of the main frame into trash can as per fig 1-3. Please note they are just the parts to support the main frame to simplify your assembly.
4. Raise up the frame, assemble the rear stabilizer (2) onto the main frame (1) by using the cross bolt (7&7A), the spring washer (9) and the flat washer (16). Please refer to 1-4.

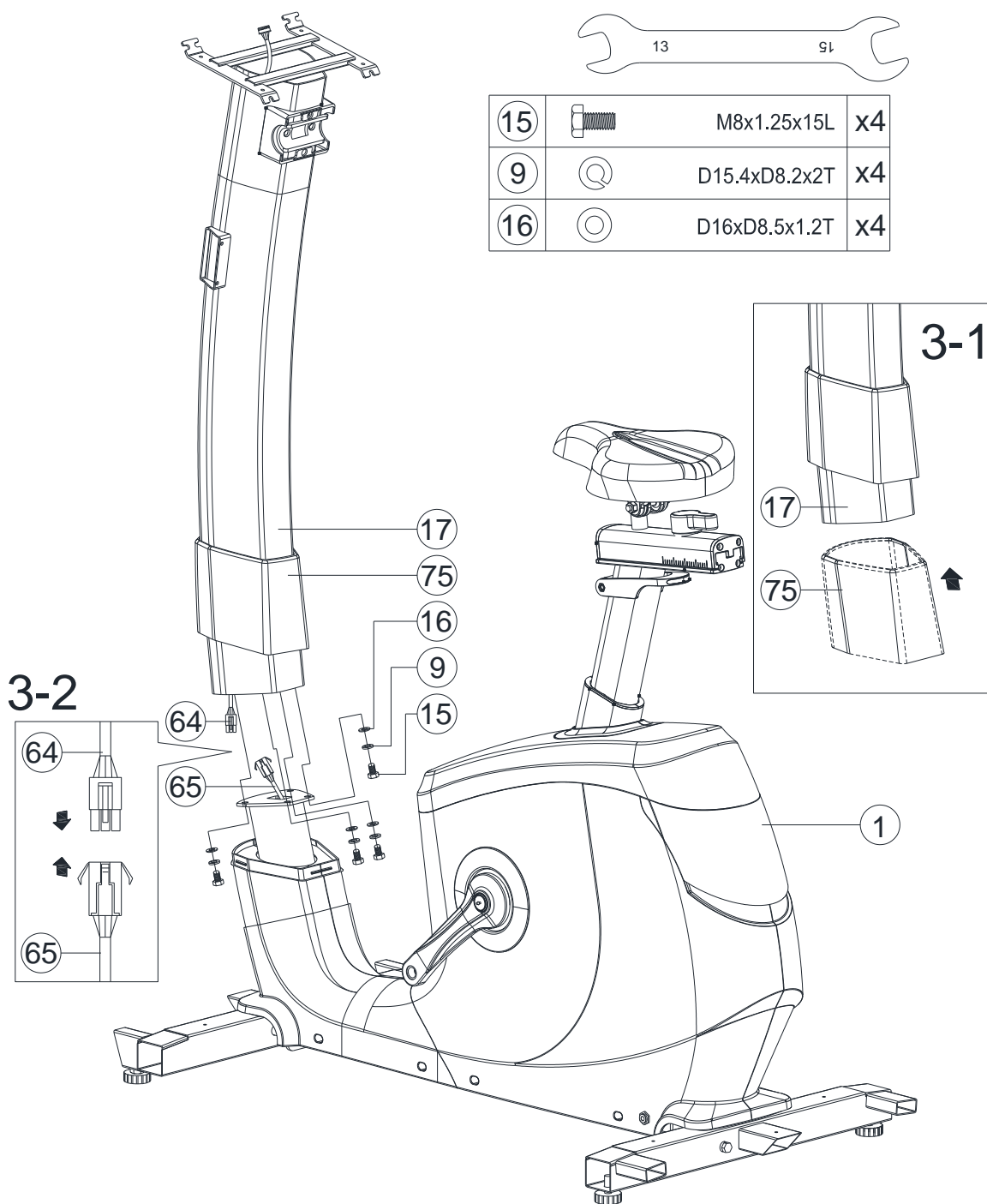
STEP 2



Step-2

1. Assemble the saddle onto the saddle post by spanner. Please refer to 2-1 & 2-2
2. Adjust the saddle position vertically. Please refer to 2-3
3. Adjust the saddle position horizontally. Please refer to 2-4

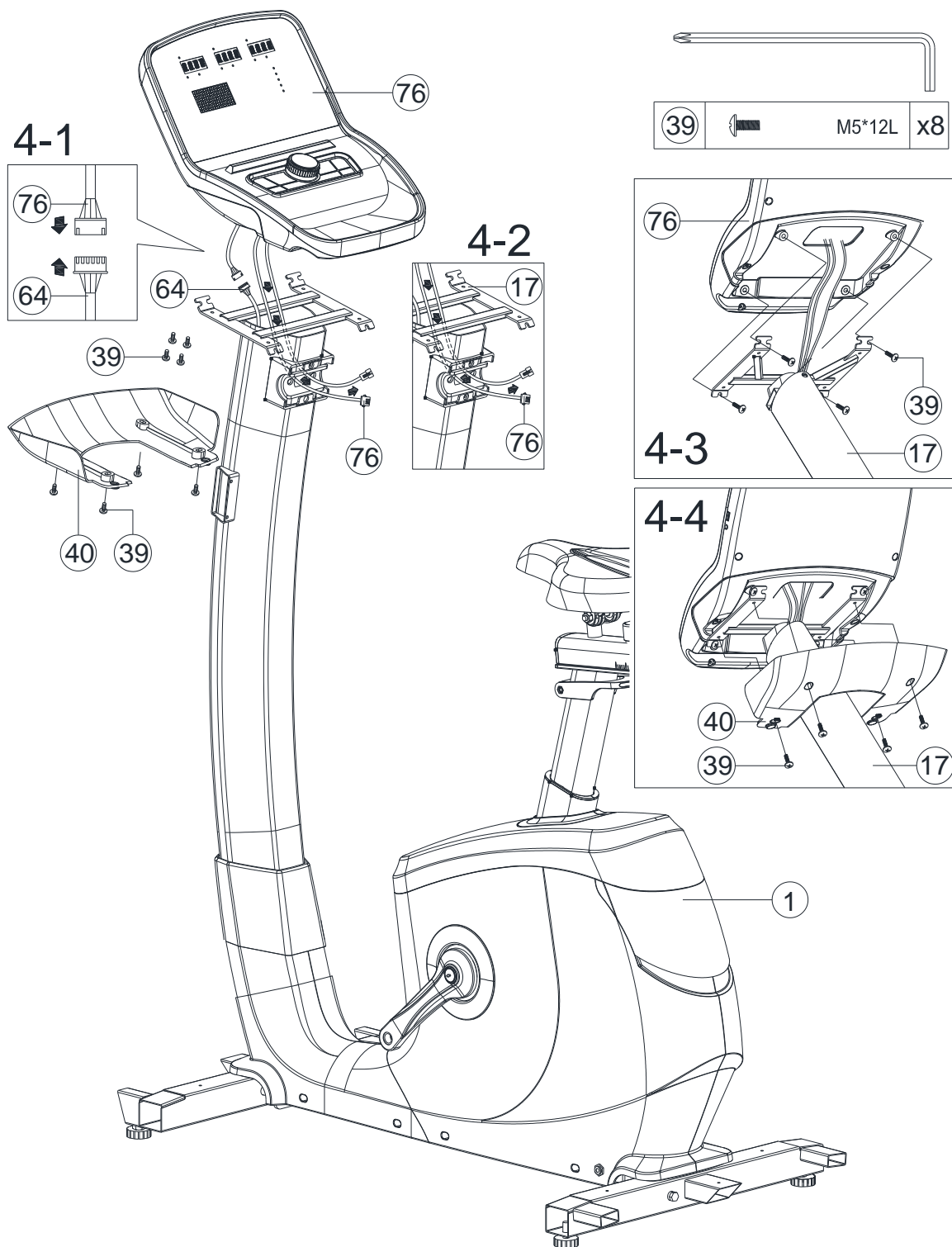
STEP 3



Step-3

- 1) Suggest assembling this step by two persons.
- 2) First, lift up the upper protective cover (75) like fig. (3-1), then connect the console cable (64 & 65) like fig.(3-2)
- 3) Insert the front post (17) on the main frame and tighten it by the flat washer (16), the spring washer (9),and bolt (15).Place down the upper protective cover and make it tight on the main frame.

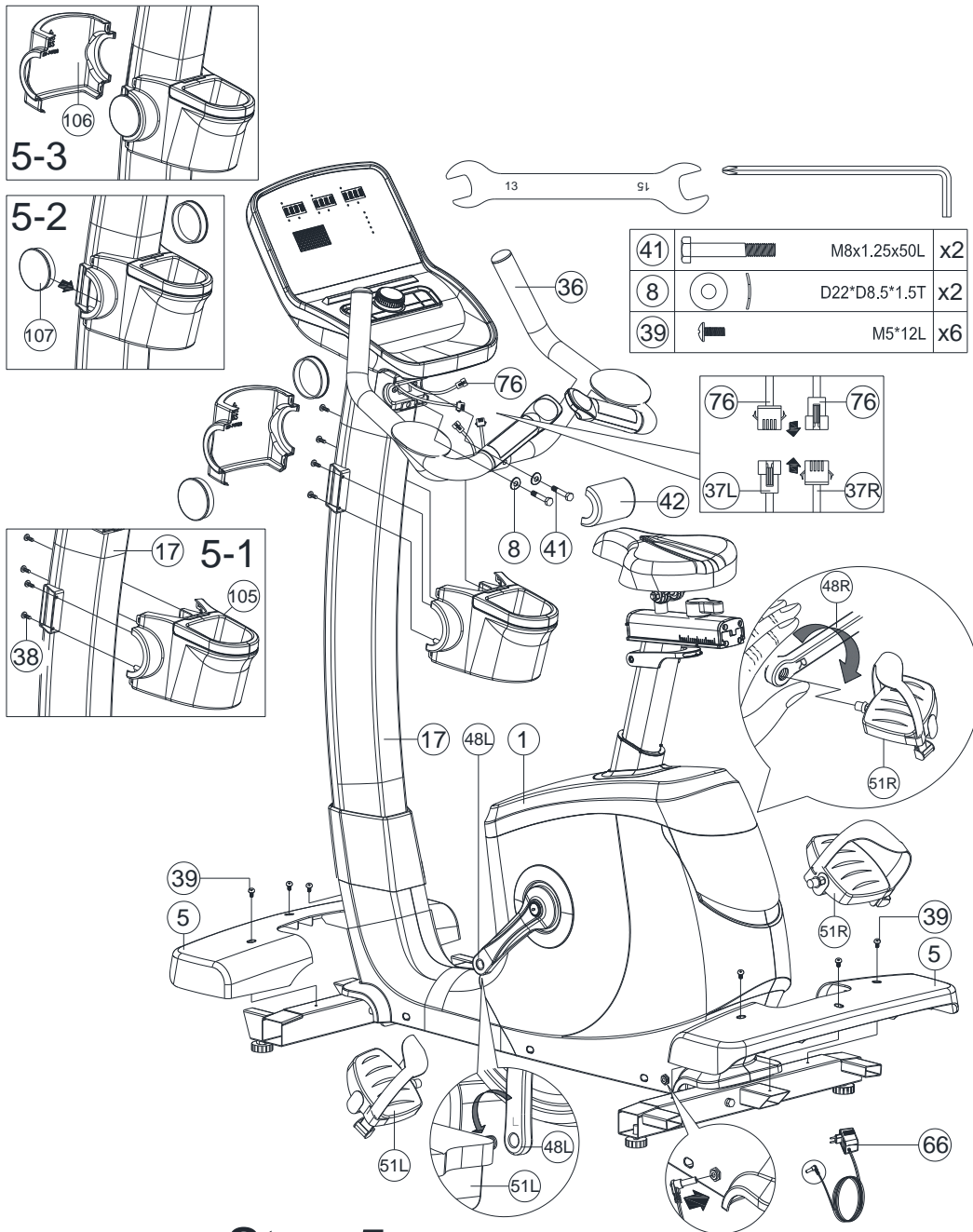
STEP 4



Step-4

- 1) Connect the console (76) with middle cable for console (64). See fig 4-1.
- 2) Through the console cable into the front post (17) out. See fig 4-2.
- 3) Tighten the console onto front post by bolt (39). See fig 4-3
- 4) Fix the back cover for console (40) with console by cross bolt (39). See fig 4-4.

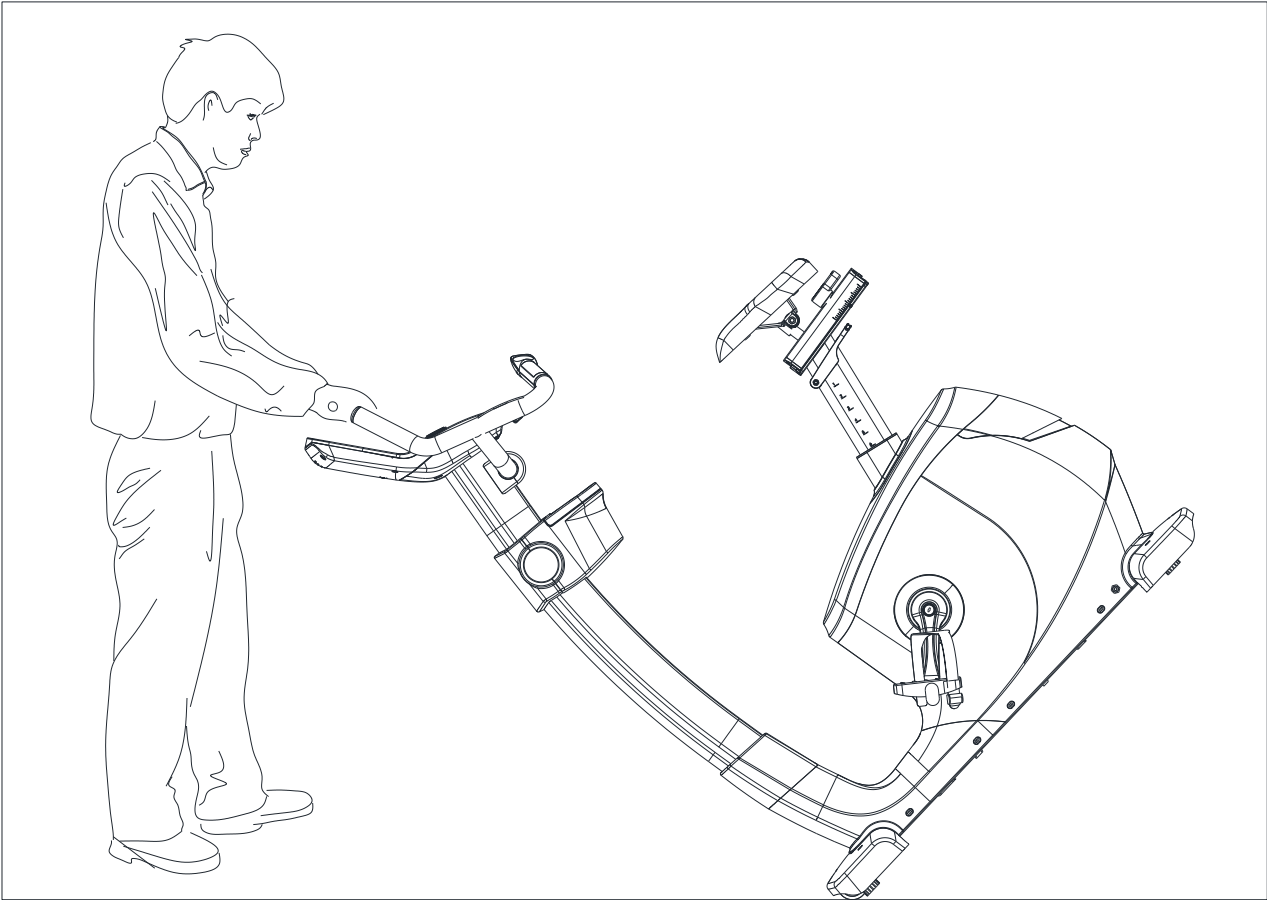
STEP 5



Step-5

1. Connect the console (76) with Lower cable for quick button (2) (37L) and Lower cable for quick button (1) (37R).
- 2, Assemble the handlebar (36) onto front post (17) by the curved washer (8) and hex bolt (41). Cover the rear protective cover for handlebar (42) .
- 3, Assemble the pedal (51L & 51R) with left crank (48L & 48R). Left pedal by counter-clockwise, right pedal by clockwise.
4. Cover the cover of front & rear stabilizer (5),fasten them by using the cross bolt (39).
- 5.Assemble the water bottle holder(front)(black) (105) & cap (107) & the water bottle holder(rear)(black) (106) onto the front post .See above pictures.Please refer to fig (5-1)(5-2)(5-3).

Move the machine: The machine with wheel, you could move the machine easily.



INSTRUCTION**【DISPLAY FUNCTIONS】**

ITEMS	DESCRIPTION
TIME	Setting range: 0:00~99:00 (±1 minute) Display range: 0:00~99: 59
DISTANCE	Setting range: 0.00~99.0 (±1) Display range: 0.00~99.99
CALORIES	Setting range: 0~9990 (±10) Display range: 0~9999
PULSE	Setting range: 0~30~230 (±1) Display range: 0~230
WATTS	Display range: 0~999
SPEED	Display current working speed , max to 99.9.
RPM	Display current RPM Display range : 0~999

【BUTTON FUNCTIONS】

ITEMS	DESCRIPTION
“+ ”	Setting or increase the training resistance.
“- ”	Setting or decrease training resistance.
ROTARY BUTTON	To confirm all setting.
STAR/STOP	To start or stop workout.
RESET	In setting mode or in selection mode , press it back to initial training mode, if keep press this button 2s , computer will re-start.
RECOVERY	To test heart rate recovery status.
BODY FAT	To test body fat % when press the BODY FAT button in standby mode .

【OPERATING PROCEDURE】

Power on & Power off

Power on :

1. LED will display all segments, such as wheel diameter, KM or ML, Eurasian gauge.(image1, image 2)

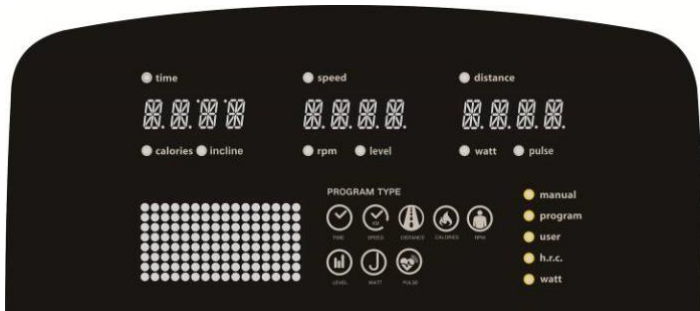


Image 1



Image 2

2. Enter into user selection mode, setting user's private file U1-U4 (image 3), SEX (image 4), AGE (image 5), HEIGHT (image 6), WEIGHT (image 7), after that will enter into function selection mode : MANUAL, PROGRAM, USER PROGRAM, H.R.C, WATT.



Image 3



Image 4



Image 5



Image 6



Image 7

Power off :

If without RPM input in 4 minute, LED closed display, the computer in power off mode. But if detect RPM , the computer will be woke up.

MANUAL FUNCTION:

By turning the button “+” or “-” , user may set up TIME → DISTANCE → CALORIES → PULSE(image 8~ image 10) . Press START/STOP if without setting to start workout,and in working period user can adjust the RESISTANCE LEVEL,LED display the working value. Then press START/STOP,computer will enter into break mode ,press button “RESET” leave this mode.



Image 8



Image 9



Image 10

PROGRAM FUNCTION:

A. In this mode, there are 12 programs (P1~P12) for user to select (image 11). While user chose the PROGRAM and turning the button “+” or “-” to setting the TIME (image 12), LED display the setting value by user adjustment ,if finished setting press “START/STOP” to start work (in break mode user can choose to adjust the “TIME” value). In START status, user can adjust RESISTANCE level . During working time , press “ START/STOP” ,computer will enter into break mode, press button “RESET” leave this mode.

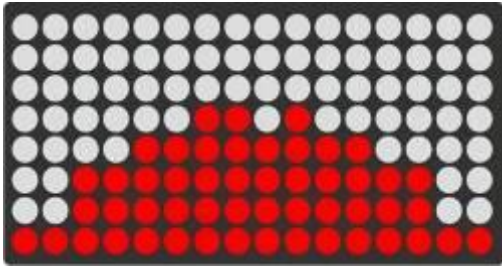


Image 11

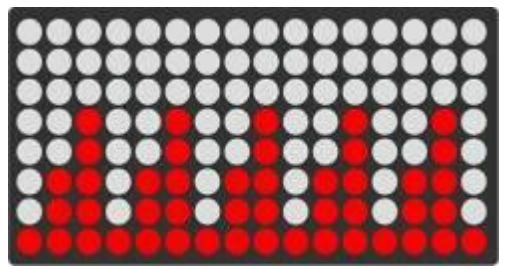


Image 12

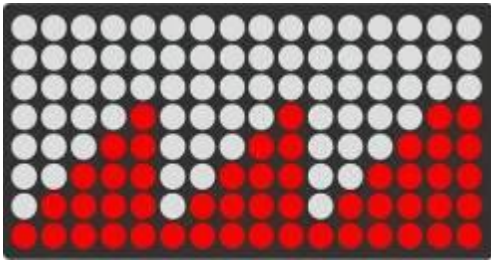
B. PROGRAM IMAGES AS BELOW :



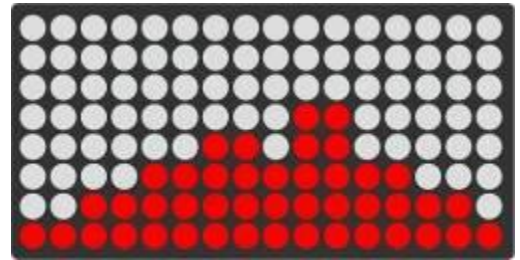
P1



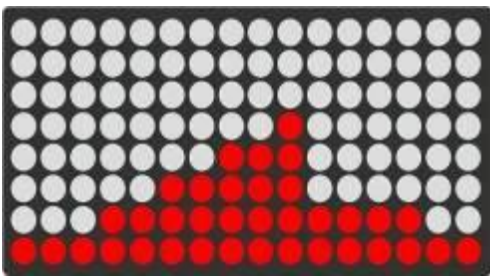
P2



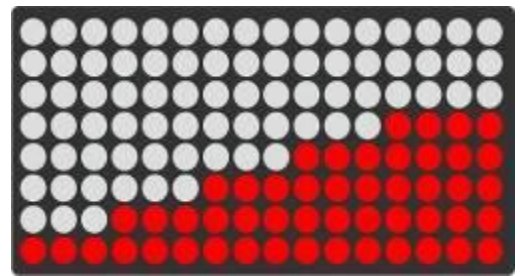
P3



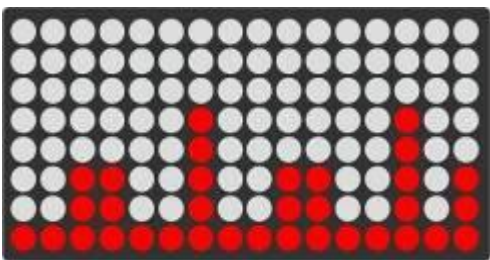
P4



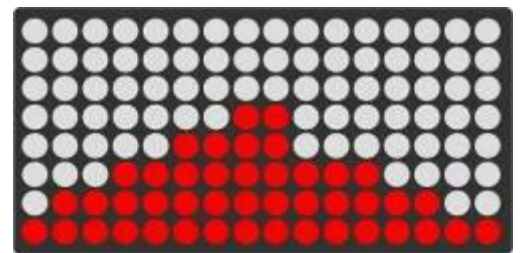
P5



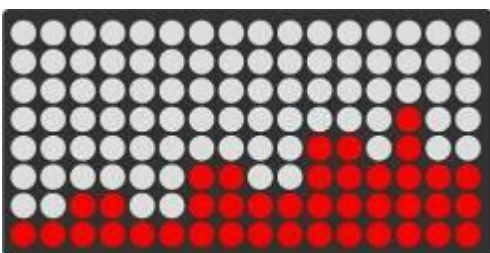
P6



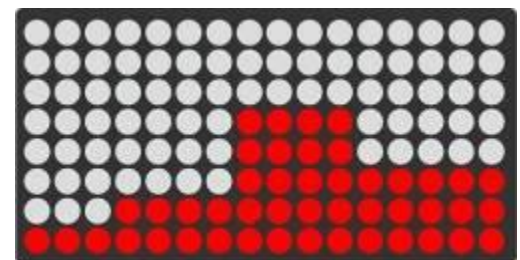
P7



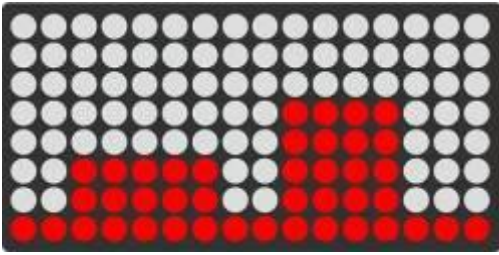
P8



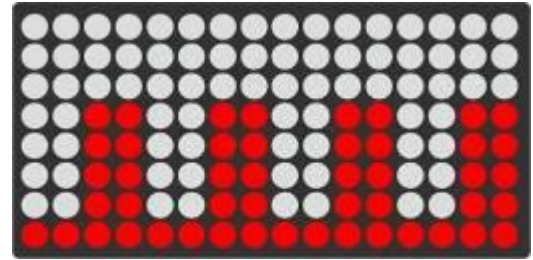
P9



P10



P11



P12

USER PROGRAM FUNCTION:

By turning the button “+” or “-” , user can setting PROGRAM image, then press MODE/ENTER to confirm the setting value of resistance (image 13), if user want to stop setting pls keep press MODE/ENTER button 2s, LED shows last setting value. While press MODE/ENTER button 2s,user can setting the “TIME”(image14), if no setting value, press “START” enter into working image. In START mode user can adjust the resistance .During the working time press “START” enter into break mode, then press button “RESET” leave this mode.



Image 13



Image 14

H. R.C FUNCTION :

In H.R.C mode , LED screen will show heart rate percentage 55%, 75%, 90% and TARGET. User may select one of the heart rate percentage by turning “+” or “-” button for training (image 15).

TARGET preset value is 100 , user can setting the pulse value by themselves, press the rotary button can setting TIME value (image 16), if do not need, press “START/ STOP “, it will start to work according the H.R.C function and show the current pulse value .If not detect the pulse ,LED display as image 17.During the working time press “START” enter into break mode, then press button “RESET” leave this mode.



Image 15



Image 16



Image 17

WATT FUNCTION:

The preset watt value 120 (image 18), by turning “+” or “-” button to setting the WATT value

(setting range : 10~350). Finished setting, press the rotary button to set TIME (image 19), if no need setting the Time value, press “ START/STOP”, resistance value will adjust automatic according to the set target WATT value. During the working time press “START/STOP” enter into break mode, then press button “RESET” it will leave this mode.



Image 18



Image 19

RECOVERY FUNCTION:

A. If no pulse input, it's invalid press “RECOVERY” button.

B. If detected pulse input, press this button to “RECOVERY” function mode, time count down from 00:60 to 00:00 (image20). Screen will display your heart rate recovery status F1,F2....to F6 (image 21). F1 is the best,

F6 is the worst. User may keep exercising to improve the heart rate recovery status.

C. In testing ,press the RECOVERY button to leave this test mode.



Image 20



Image 21

BODY FAT FUNCTION:

A. Setting personal profile.

B. Press "BODY FAT" button to start test body fat (image22 ~ image 24), at this time user should grab the hand grip correctly, computer will display the test value.

If any following situation is accrued, there will be other possible indications showing on LCD.

"E-1"(image 25) - When user sees this indication, it means user did not put your thumb properly on the conductor. Please try again.

"E-4" - When user sees this indication, it means the BODY FAT advice is exceeded the setting range(5%~50%).

After finished testing, LED display both FAT% and BMI(image26, image27). In "BODY FAT"test mode,press"BODY FAT" button to cancel this testing and go back to continue the previous exercise before testing.



Image 22



Image 23



Image 24



Image 25



Image 26



Image 27



GARLANDO SPA
Via Regione Piemonte, 32 - Zona Industriale D1
15068 - Pozzolo Formigaro (AL) - Italy
www.toorx.it - info@toorx.it